



CISA®

Mortice locks

For steel and armoured doors



ALLEGION™



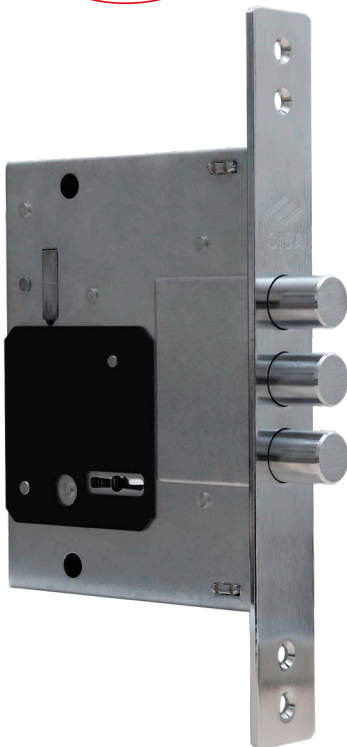
New range of reliable and complete locks

Consistent performance and robustness for every need.

The new range of CISA Mortice Locks is the perfect solution for steel and armoured doors. The design of the entire family of devices offers high reliability and makes them compatible with the main products on the market.

The range includes galvanized steel cases, chrome-plated finishes on the visible parts and strike plates, a universal non-handed latch, and three 16 mm diameter steel deadbolts.

A double-bit version with 5 red plastic-headed keys is also available.



DOUBLE-BIT SECONDARY LOCK ITEM 57426

- 8-lever key system (over 40,000 combinations).
- 4-throw deadbolt, 36 mm.
- Manganese steel drill protection plate.



EUROPEAN CYLINDER SECONDARY LOCK ITEM 56426

- 3-throw deadbolt, 34.5 mm.



EUROPEAN CYLINDER MAIN LOCK ITEM 56436

- Reversible latch.
- 3-throw deadbolt, 34.5 mm.

TECHNICAL FEATURES

- Zinc-plated steel case.
- Chrome-plated steel faceplate.
- Reversible chrome-plated steel latch, item 56436.
- The handle control latch withdrawn with easy rotation thanks to the radial bearing.
- 3-piston deadbolt, 16 mm diameter, chrome-plated steel.

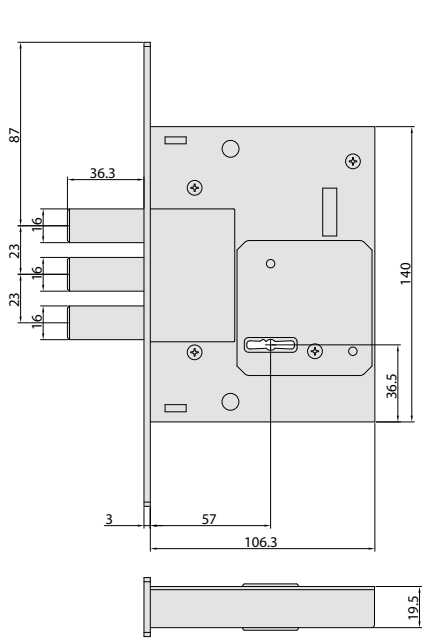
CERTIFICATIONS

- Lock certified according to European Standard UNI EN 12209:2024
- Item 1.56436.60.0 ||C|5|0|0|F|6|0|
- Item 1.56426.60.0 ||C|0|0|0|F|6|0|
- Item 1.57426.60.0 ||C|0|0|0|F|6|C|

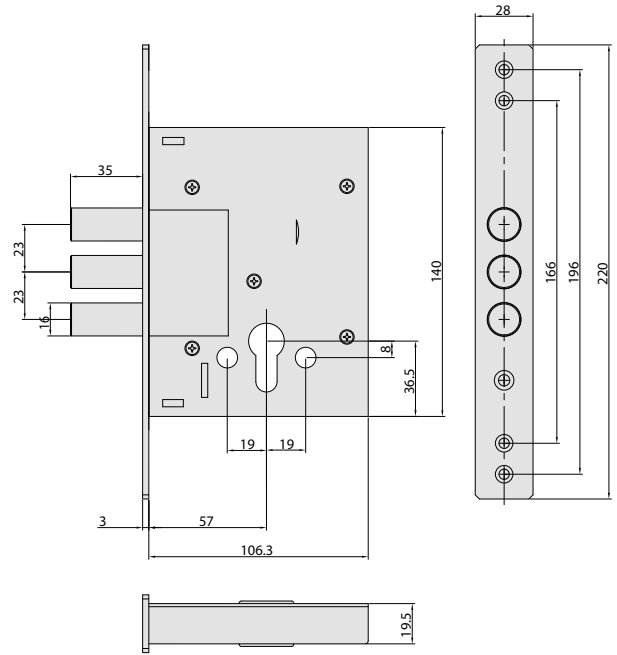
HAND

- 0 = non-handed

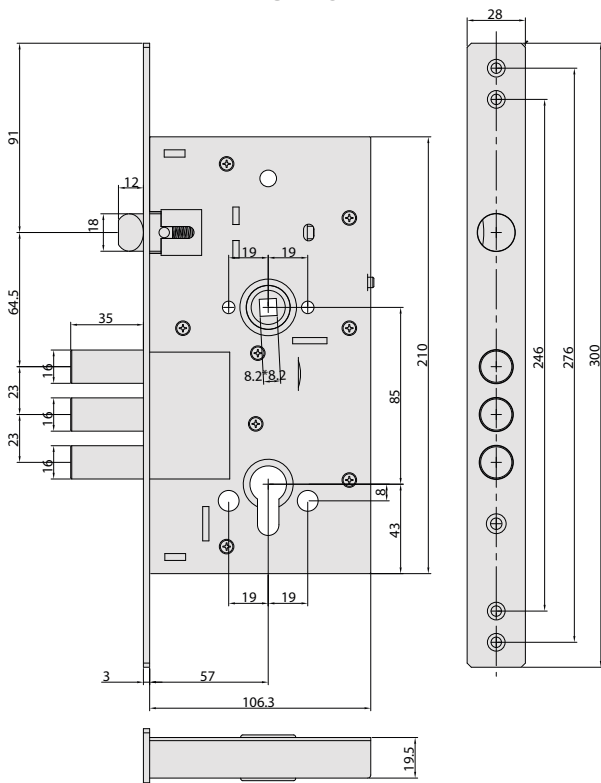
DIMENSIONAL DRAWINGS



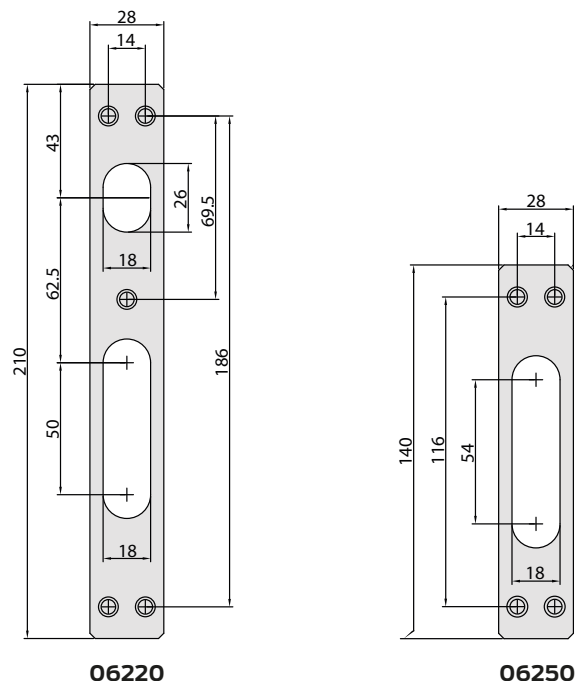
57426



56426



56436



06220

06250

TYPE	DESCRIPTION	N. DEADBOLTS	PROJECTION	DEADBOLTS CENTRE DISTANCE	CENTRE DISTANCE	FACEPLATE	BACKSET		ITEM
	<ul style="list-style-type: none"> Main central lock with European profile cylinder Reversible latch and deadbolt INCLUDED <ul style="list-style-type: none"> Cylinder and lock fixing screws ON REQUEST <ul style="list-style-type: none"> European profile cylinder Strike plate item 1.06220.50.0 	3	-	23	85	28	60	10	1 56436 60 0
	<ul style="list-style-type: none"> Secondary lock with European profile cylinder Deadbolt only INCLUDED <ul style="list-style-type: none"> Cylinder and lock fixing screws ON REQUEST <ul style="list-style-type: none"> European profile cylinder Strike plate item 1.06250.51.0 	3	-	23	85	28	60	10	1 56426 60 0
	<ul style="list-style-type: none"> Double-bit secondary lock Deadbolt only INCLUDED <ul style="list-style-type: none"> Lock fixing screws 5 double-bit keys ON REQUEST <ul style="list-style-type: none"> Strike plate item 1.06250.51.0 	3	-	23	85	28	60	10	1 57426 60 0
	<ul style="list-style-type: none"> Chrome-plated steel strike plate for lock item 56436 								20 1 06220 50 0
	<ul style="list-style-type: none"> Chrome-plated steel strike plate for locks items 56426 and 57426 								20 1 06250 51 0

CHOOSE YOUR SECURITY LEVEL

 RS5 	 AP4 S 	 TEKNO iNovate 	 AsixP8
--------------------	----------------------	------------------------------	-----------------------

About Allegion

At Allegion (NYSE: ALLE), we design and manufacture innovative security and access solutions that help keep people safe where they live, learn, work and connect. We're pioneering safety with our strong legacy of brands like CISA®, Interflex®, LCN®, Schlage®, SimonsVoss®, Von Duprin®. Our comprehensive portfolio of hardware, software and electronic solutions is sold around the world and spans residential and commercial locks, door closer and exit devices, steel doors and frames, access control and workforce productivity systems. For more, visit allegion.com.

AXA ■ BRICARD ■ Briton ■ CISA ■ interflex ■ KRYPTONITE ■ NORMBAU ■ SimonsVoss technologies ■ TRELOCK

CISA SpA
Via Oberdan 42
48018 Faenza (RA) Italy

Customer Service and Technical Support
+39 0546 188 0070

Ph. +39 0546 677111
Fax +39 0546 677150

cisa.com
cisa.vendite@allegion.com

